



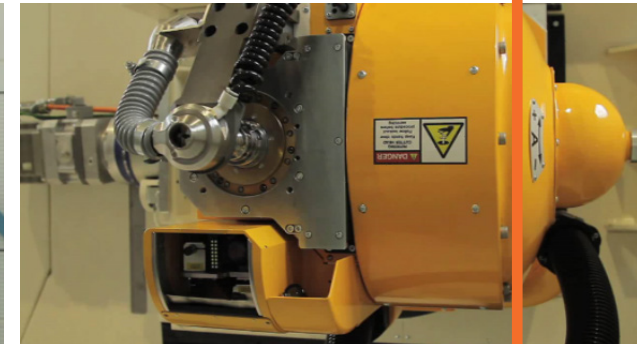
**Head** for DRILLING AND COUNTERSINKING applications  
**DRILLING HEAD**



# DRILLING HEAD

## CARACTERÍSTICAS

- **W axis:** Quill axis, specially designed for drilling operations.
- **Pressure foot:** Avoids vibrations while drilling, guarantee chips & dust removal. Increases countersing accuray.
- **Swiveling Pressure foot:** Measures normality of the machine while in contact.
- **Vision system:** Measures quality features.
- **Hole probe:** Measures straight and countersink holes.



HEAD	APPLICATION	BASELINE		OPTIONS		
		W AXIS	PRESSURE FOOT	SWIVELING PRESS FOOT	VISION SYSTEM	HOLE PROBE
TDH	Drilling, countersiking, measuring, hole probing	V	V	V	V	V

HEAD	C AXIS			A AXIS			SPINDLE		
	TRAVEL	SPEED	ACC.	TRAVEL	SPEED	ACC.			
TDH	+190°	12rpm	0,54 rpm/s2	+110°	12rpm	0,54 rpm/s2	24Nm	140mm	HSK 150

# **DRILLING HEAD** **Head for DRILLING AND COUNTERSINKING applications**



**Standard: spindle FISCHER**



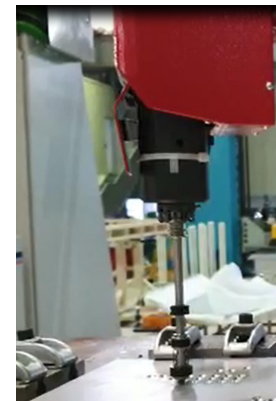
**w axis**



**Pressure foot**



**Swiveling p\_foot**



**Vision system**



**Hole probe**

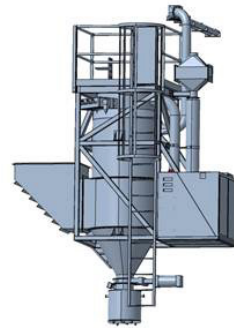


# AUXILIARY EQUIPMENT AND OPTIONS

Baseline equipment and options (availability depends on machine structure)



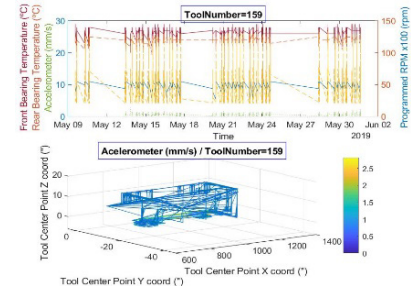
SIEMENS 840D SL



Dust & chip removal



Touch probe



Machine Data Logger



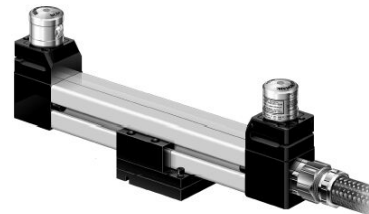
Safety perimeter



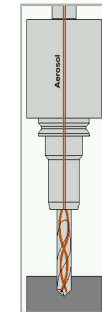
Automatic tool changer



Tool id. system



Tool meas. system



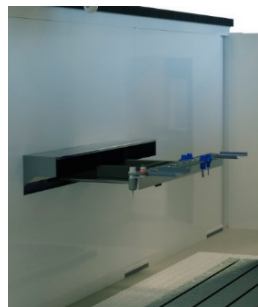
MQL



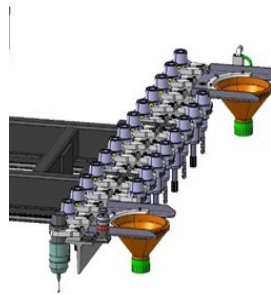
Machine health verification



CCTV



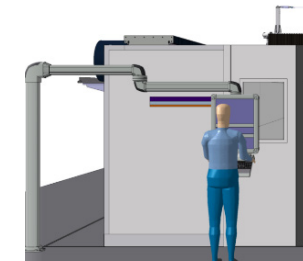
Fixed tool changer



Vacuum hoods



Coupons test bench



Hanging type op. panel